

Guide to launching the portable version of the AreaTester app.

1. Package contents.

App files.

This package contains 10 application files specially compiled to run in different versions of **BricsCAD**. For more information about the compliance of the application files with the **BricsCAD** version, see the table below:

App file	File bitness	BricsCAD version
AreaTester17BX64.brx	64-bit	BricsCAD V17
AreaTester17BX86.brx	32-bit	
AreaTester18BX64.brx	64-bit	BricsCAD V18
AreaTester18BX86.brx	32-bit	
AreaTester19BX64.brx	64-bit	BricsCAD V19
AreaTester19BX86.brx	32-bit	
AreaTester20BX64.brx	64-bit	BricsCAD V20
AreaTester20BX86.brx	32-bit	
AreaTester21BX64.brx	64-bit	BricsCAD V21
AreaTester22BX64.brx	64-bit	BricsCAD V22

Configuration file.

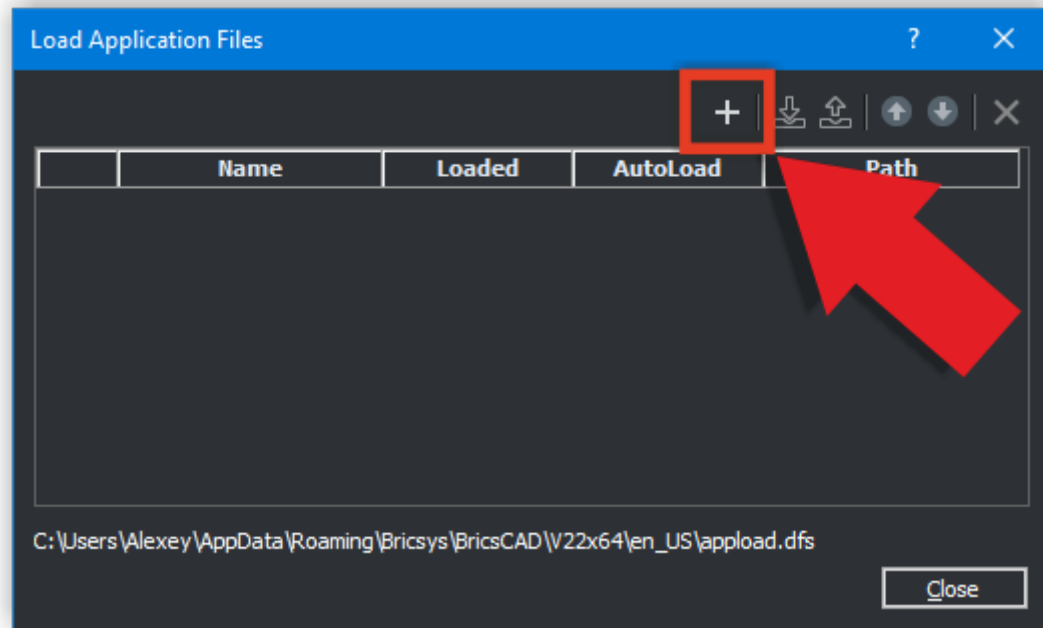
The **AreaTester.cfg** configuration file contains application configuration data. This file should always be placed in the same folder as the application files.

2. Installing the application.

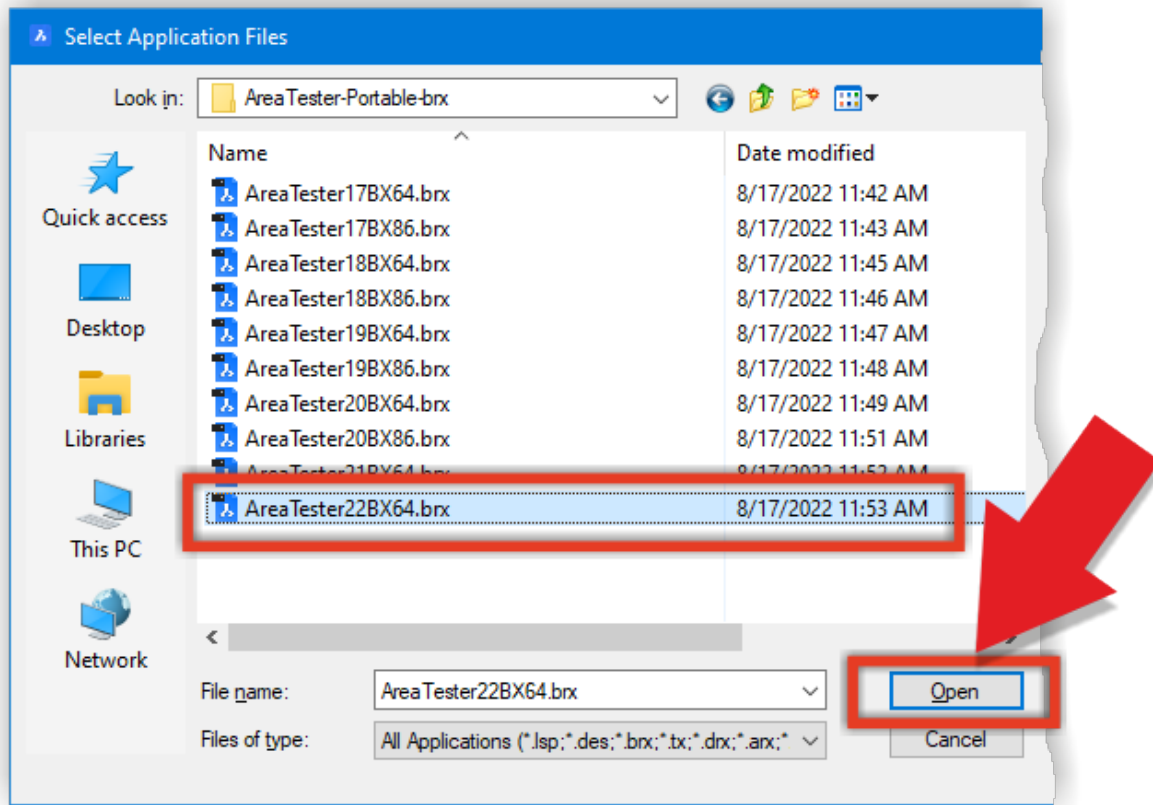
Unzip all the files in this package to any non-write-protected folder on your computer. No other steps are required to install the application files.

3. Loading the app.

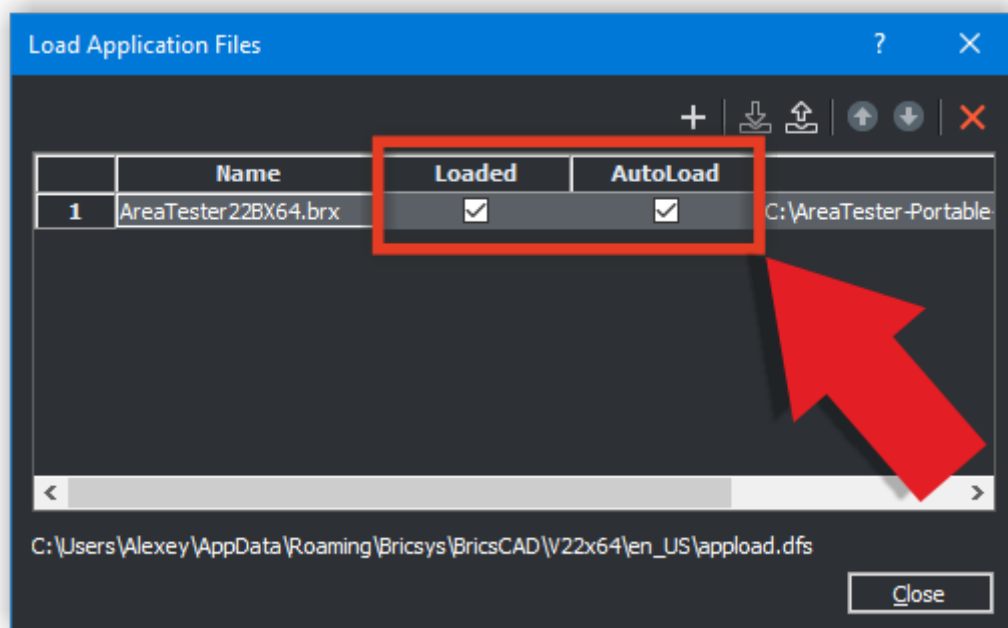
- Start **BricsCAD**.
- After **BricsCAD** starts, type **_APpload** at the command prompt.
- At the top of the dialog box that appears, click on the icon with a plus sign.



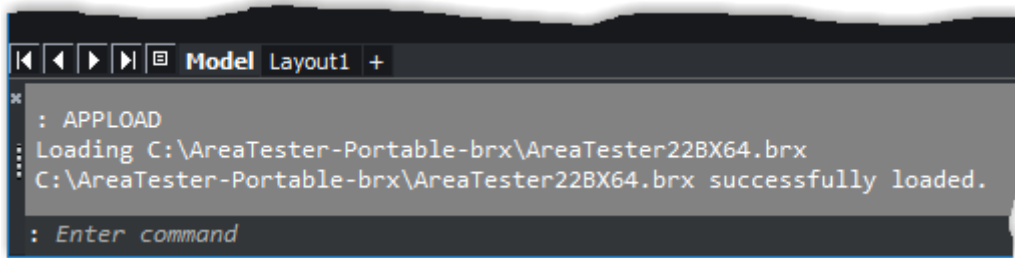
- Next, specify the full path to the application file from the unzipped package and click the **"Open"** button. The application file selected in this window must match the version of your **BricsCAD** (see table above).



- To complete the application loading process, check the boxes **"Loaded"** and **"AutoLoad"**.



- If you specified the correct file to load the app, you will see a message on the command line that the application was successfully loaded.



```
Model Layout1 +
: APPLOAD
Loading C:\AreaTester-Portable-brx\AreaTester22BX64.brx
C:\AreaTester-Portable-brx\AreaTester22BX64.brx successfully loaded.
: Enter command
```

- Close the application load dialog box.

4. Launching the app.

You can now launch the **AreaTester** application in **BricsCAD**. To do this, at the command line, enter the **_AREATESTER** command or the short **_ATST** command.